

Code Analysis

- Up-Fit
- Interior
- Shell
- New
- Addition
- Fire Job / Repair
- Other

Zoning Classification : Industrial 1 (I-1)
 Project: Suite C-6 (No Tenant)
 Address: 319 Garlington Road, Suite C-6 / Greenville, SC 29615
 Contact Person: John Luther, PE
 Company Contact: John Luther & Associates
 Contact Phone: (864) 627-0250
 Contact Fax: (864) 627-0320

Provider	License #	Phone
Architect	Dennis Collier	(864) 627-0250
Structural	John Luther, PE	(864) 627-0250
Mechanical	Bill Knight, PE	(864) 292-7519
Electrical	John Luther, PE	(864) 627-0250
Plumbing	John Luther, PE	(864) 627-0250
Fire	A#A Fire Protection	(864) 859-9700
Civil	John Luther, PE	(864) 627-0250

Occupancy Classification :
 B- Business

Type of Construction:
 Type V-B Unprotected
 Sprinkled

Allowable Height	40'-0"
Allowable # of Stories	2
Allowable Sq. Footage	9,000 Sq.Ft.
Actual Height	21'-0"
Actual # of Stories	1
Actual Sq. Footage	1,626 Sq.Ft.

Occupancy	Floor Area in Sq.Ft. per Occupant	# of Occupants
Office	100 gross	17

Total Occupants = 17

Occupant Load	Min. # of Exits Required	# of Exits Provided
1-500	2	1

Occupancy	Max. Occupant Load
B- Business	50

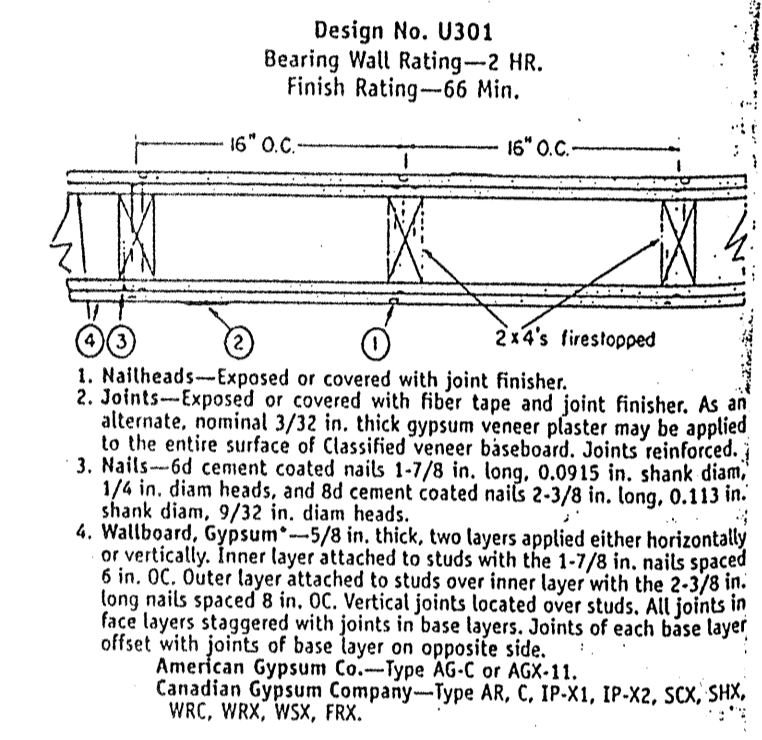
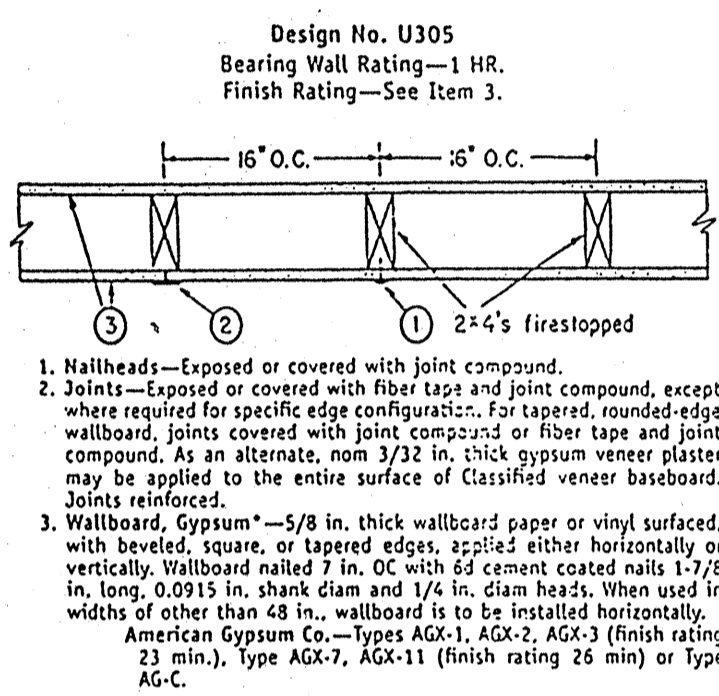
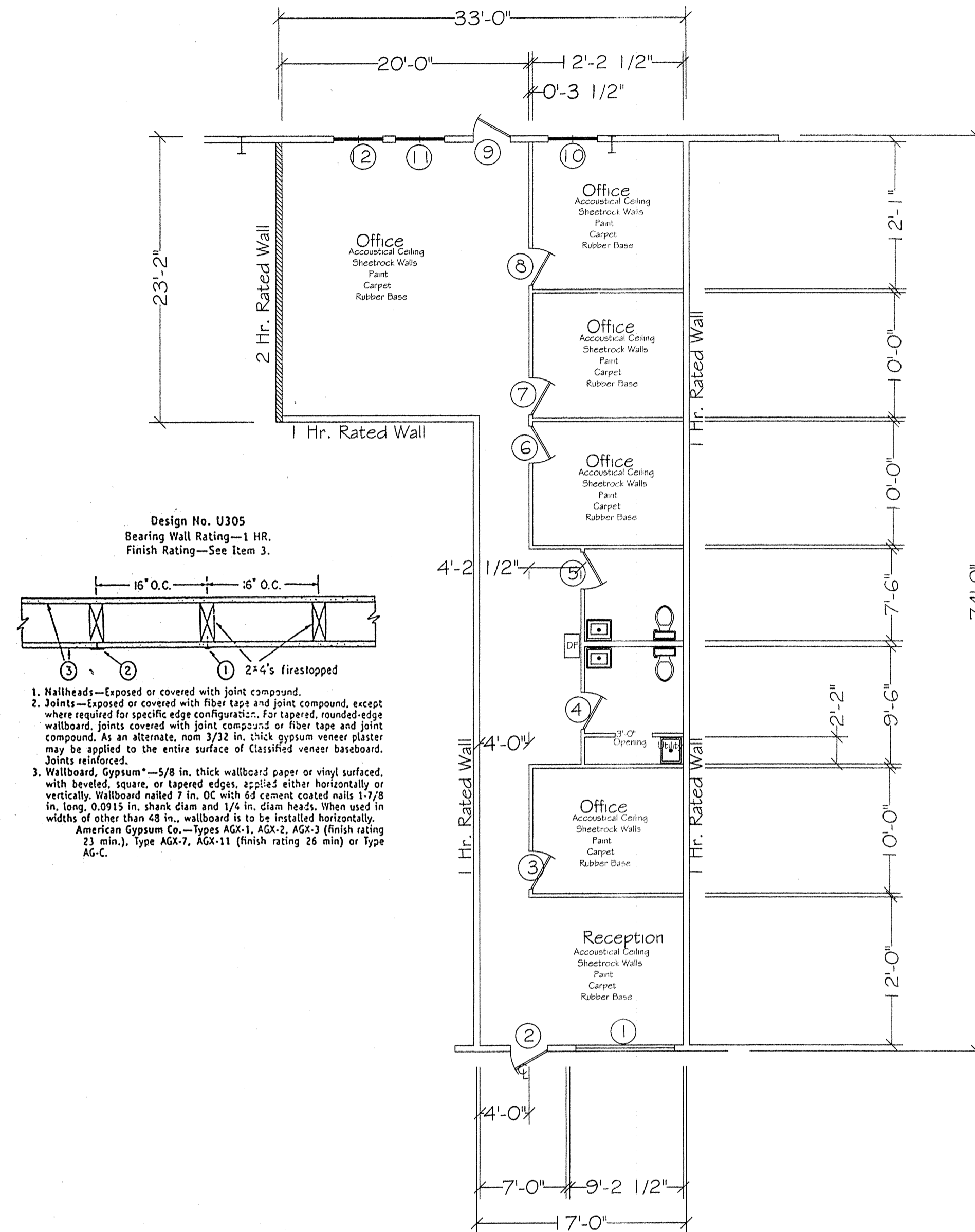
* Meets Single Egress Requirements

Max. Travel Distance Allowed	200 Ft.
Max. Travel Distance	74 Ft.

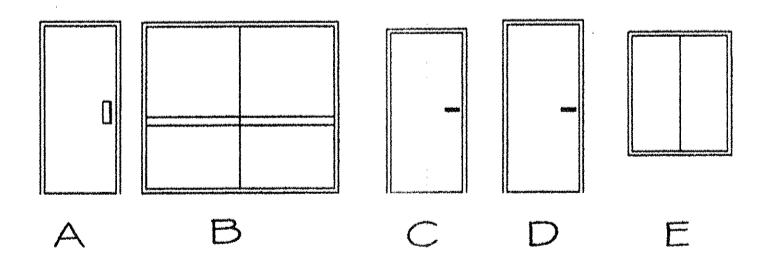
2000 International Plumbing Code
 Table 403.1 - Min. # of Plumbing Facilities

Occupancy	Available			
	Water Closets Male / Female	Lavatories	Drinking Fountains	Service Sinks
1/2 men	1 per 50	1 per 80	1 per 100	1
1/2 Women	1 per 50			

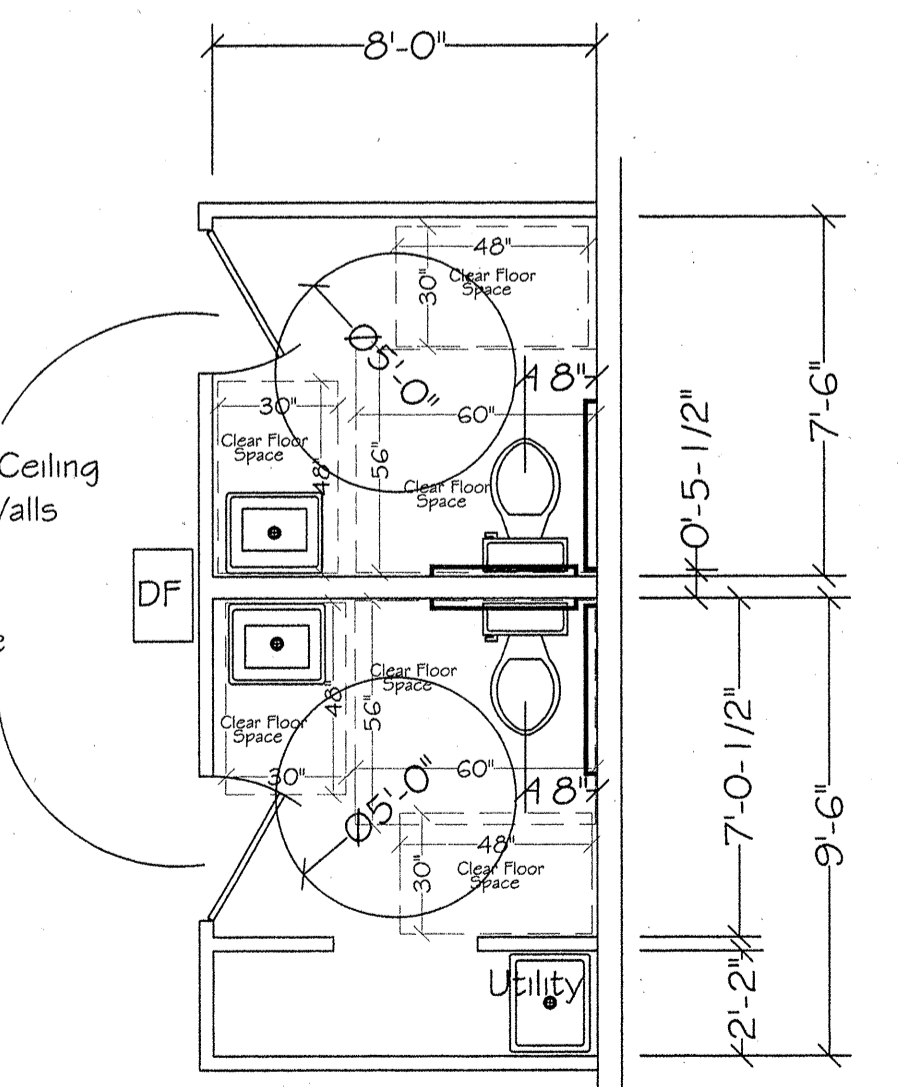
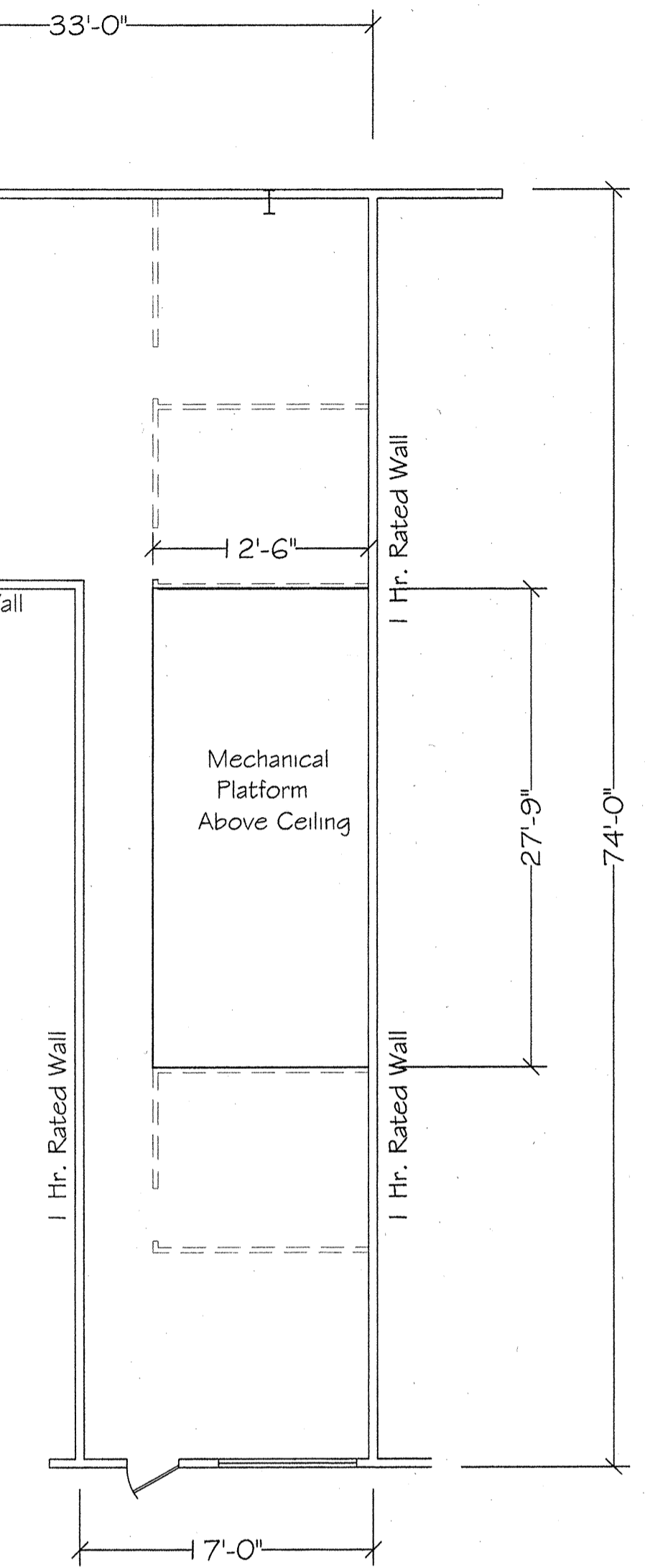
Occupancy	Provided			
	Water Closets Male / Female	Lavatories	Drinking Fountains	Service Sinks
1/2 men	1	2	1	1
1/2 Women	1			



Mark	Size	Elev.	Remarks	Hardware	Rating
1	8'-0" x 7'-0"	B	Window	Storefront	
2	3'-0" x 7'-0"	A	Storefront		
3	3'-0" x 6'-8"	C	H.C./6 Panel	Single Action Passage Set, Hinges	
4	3'-0" x 6'-8"	C	H.C./6 Panel	Single Action Privacy Set, Hinges	
5	3'-0" x 6'-8"	C	H.C./6 Panel	Single Action Privacy Set, Hinges	
6	3'-0" x 6'-8"	C	H.C./6 Panel	Single Action Passage Set, Hinges	
7	3'-0" x 6'-8"	C	H.C./6 Panel	Single Action Passage Set, Hinges	
8	3'-0" x 6'-8"	C	H.C./6 Panel	Single Action Passage Set, Hinges	
9	3'-0" x 7'-0"	D	Steel Man Door	Single Action Passage Set, Hinges	
10	4'-0" x 5'-0"	E	Window	Casement w/ Divider	
11	4'-0" x 5'-0"	E	Window	Casement w/ Divider	
12	4'-0" x 5'-0"	E	Window	Casement w/ Divider	

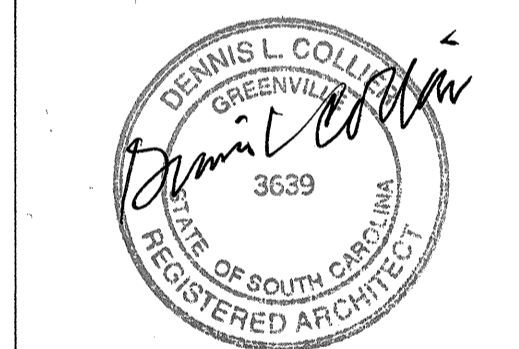


Floor Plan - Suite C-6
 Total Area: 1,626 Sq.Ft.
 Scale: 1/8" = 1'-0"



Dennis Collier
 Architect
 319 Garlington Road
 Suite B-11
 Greenville, SC 29615
 (864) 627-0250

Project
 Land Development, Inc.
 Building C
 319 Garlington Road
 Greenville, SC 29615
 Date:
 Scale:



Checked By	Date

Rev No.	Description

Drawing
 Floor Plan Ste# C-6
A-8
 Sheet ___ of ___ Sheets